

LEAD GUITAR

DOUBLE EXPOSURE

BRIAN CULBERTSON & SCOTT STEINER

♩ = 140

4

E♭MA7

1-4 5 6 7 8

SUSTAINED BENDS

G-7

9 10 11 12

E♭MA7

13 14 15 16

(A) VERSE

8

17-24 (25-32)

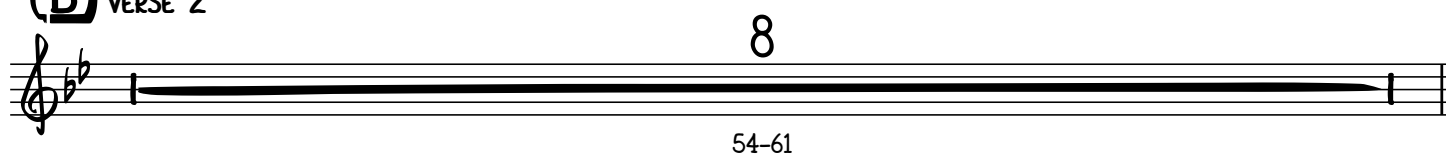
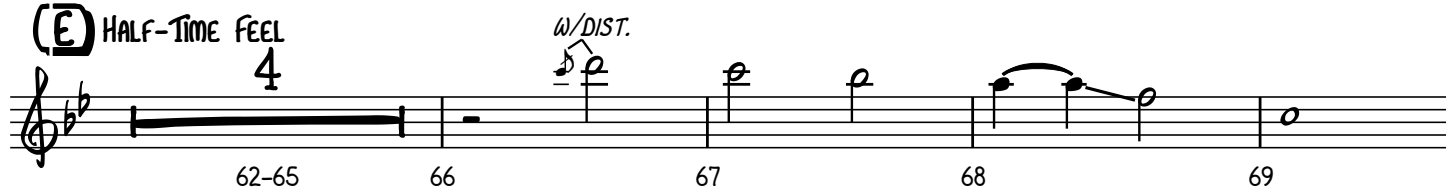
(B) HALF-TIME FEEL

4

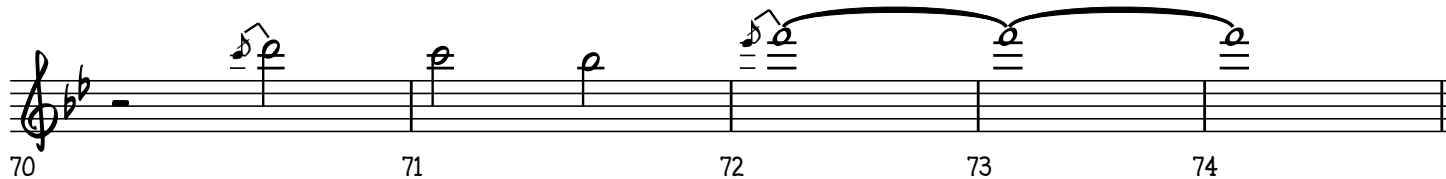
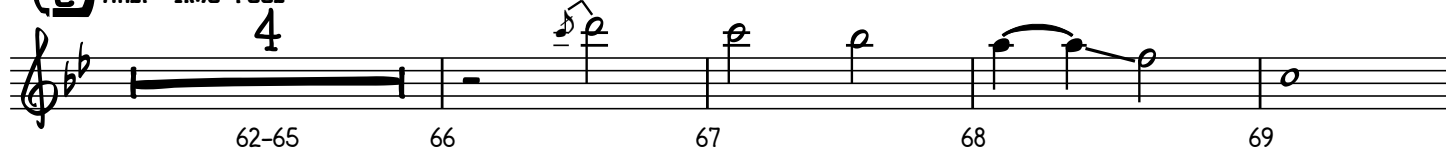
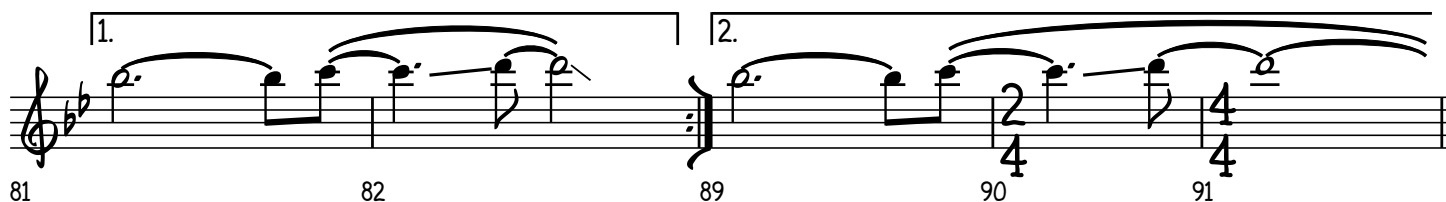
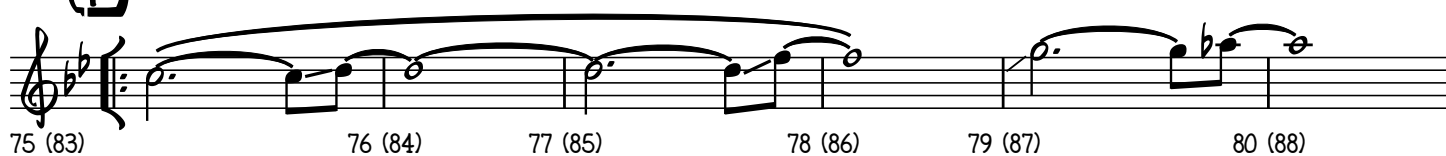
w/DIST.

33-36 37 38 39 40

41 42 43 44 45

**(C)** INTERLUDE  
G-7**E<sub>b</sub>MA7****(D)** VERSE 2**(E)** HALF-TIME FEEL  
4

w/DIST.

**(F)**

## DOUBLE EXPOSURE

## LEAD GUITAR

3

**(G)** GUITAR SOLO

92 93 94 95

G-7

96 97 98 99

E $\flat$ MA7

100 101 102 103

C-11

104 105 106 107

E $\flat$ MA7

**(H)** HALF-TIME FEEL  
4

108-111 112 113 114 115

w/DIST.

116 117 118 119 120

**(I)** VAMP & FADE  
C7(SUS4)

121 (129) 122 (130) 123 (131) 124 (132)

A $\flat$ MA7/C B $\flat$ 2/D G-9

125 (133) 126 (134) 127 (135) 128 (136)

E $\flat$ 2/G B $\flat$ -9(ADD4) C-9(ADD4) D $\flat$ MA9/F E $\flat$ MA9/G