

MASTER RHYTHM

BEYOND THE FRONTIER

BRIAN CULBERTSON

♩ = 140, HALF-TIME FEEL
Bb-11

1 (9) NO DRUMS 2 (10) 3 (11) 4 (12)

Gbmaj9/Ab

5 (13) 6 (14) 7 (15) 8 (16)

(A) INTRO 2
Bb-11

17 (25) DRUMS ENTER 18 (26) 19 (27) 20 (28)

Gbmaj9/Ab

21 (29) 22 (30) 23 (31) 24 (32)

(B) VERSE
Bb-11

33 (41) 34 (42) 35 (43) 36 (44)

Gbmaj9/Ab

37 (45) 38 (46) 39 (47) 40 (48)

(C) B-SECTION

(GTR/KEYS) Ab(SUS2) Ab Ab(SUS4) Ab

49 Gb2 50 51 Ab2 52

53 54 55 56

57 58 59 60

61 62 63 64

(D) INTERLUDE
Bb-11

65 66 67 68

69 70 71 72

(E) Bb-11

73 74 75 76

77 78 79 80

(F) VERSE
B \flat -11G \flat 6/9

81

82

83

84

G \flat MA7/AbE \flat -11

85

86

87

88

Ab(SUS2)/F

G \flat MA7

89

90

91

92

G \flat MA7/AbG \flat (SUS2)/B \flat Ab(SUS2)/C

93

94

95

96

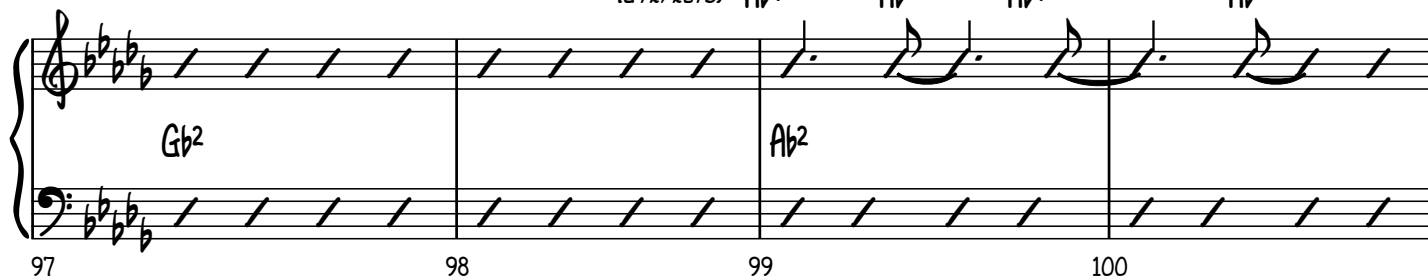
(G) B-SECTION

(GTR/KEYS) Ab(SUS2)

Ab

Ab(SUS4)

Ab

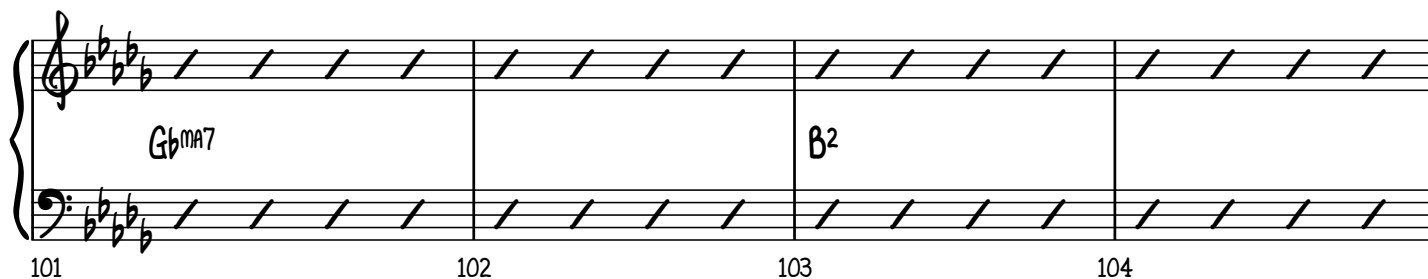


97

98

99

100

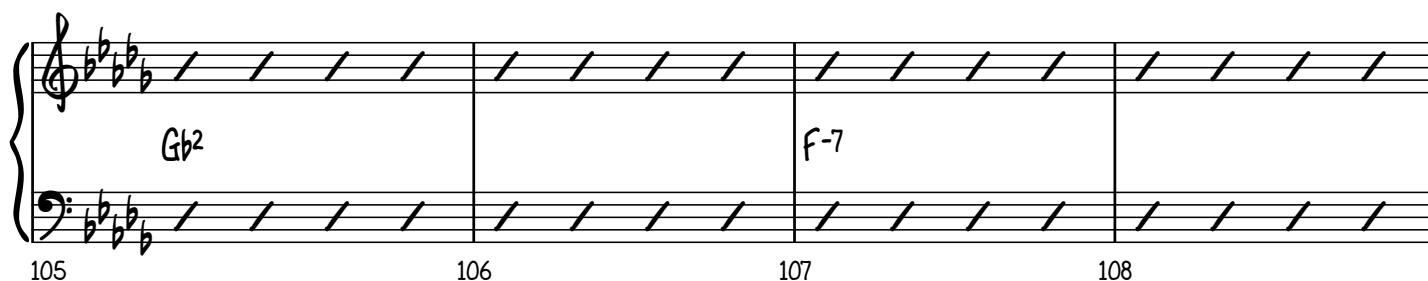


101

102

103

104



105

106

107

108

109 110 111 112 113

$Bb-$ B^2 $B^{ma7}/D\#$ $C\#^2/E\#$ $B(sus2)$ $C\#(sus2)$

(H) BRIDGE
 $Eb-7$

114 115 116 117

$Eb-7$ Db^2/F $Gb(sus2)$ $B(add9)$

118 119 120 121

$Eb-7$ Db^2/F $Bb-$ B^2 Db^2

122 123 124

$Eb-7$ Db^2 $Gb(sus2)$ $B(add9)$

125 126 127

$Eb-7$ Db^2/F B^2

(D) VAMP & FADE
 B^2

128 (136) 129 (137) 130 (138) 131 (139)

B^2 $C\#^7(sus4)$

132 (140) 133 (141) 134 (142) 135 (143)

$Eb-7$ Db^2/F